

AVAILABLE

7635 W 28TH AVENUE, HIALEAH, FL



PROPERTY HIGHLIGHTS:

- 18,779 SF FOOTPRINT
- 10% OFFICE
- 4 UNITS, 4,695 SF EACH
- 29,309 SF LOT OR 0.67 ACRES
- 5 STREET LEVEL DOORS
- 18' CEILING HEIGHT
- TWIN TEE CONCRETE ROOF
- SHORT TERM LEASES IN PLACE'
- YEAR BUILT: 1986

LOCATED ON PRIME CORNER ON WEST 28 AVENUE & WEST 76 STREET. DAILY TRAFFIC COUNT ON W 28TH AVE IS 17,600 VEHICLES PER DAY. LESS THAN ½ MILE FROM TOWN OF MIAMI LAKES. OFFERS EASY ACCESS TO PALMETTO EXPRESSWAY, I-75, GRATIGNY EXPRESSWAY & FLORIDA TURNPIKE.

ASKING PRICE:
\$3,100,000.00

For more information please contact



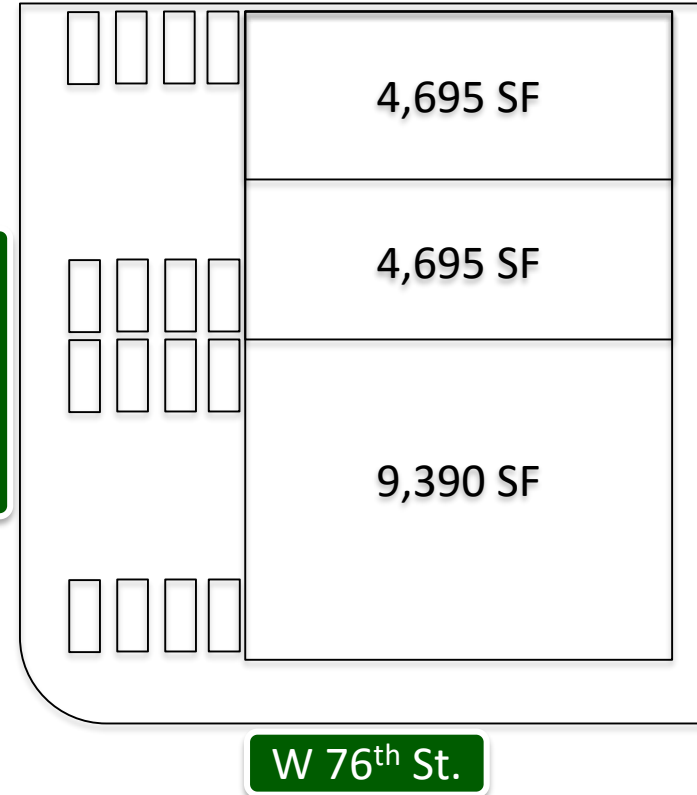
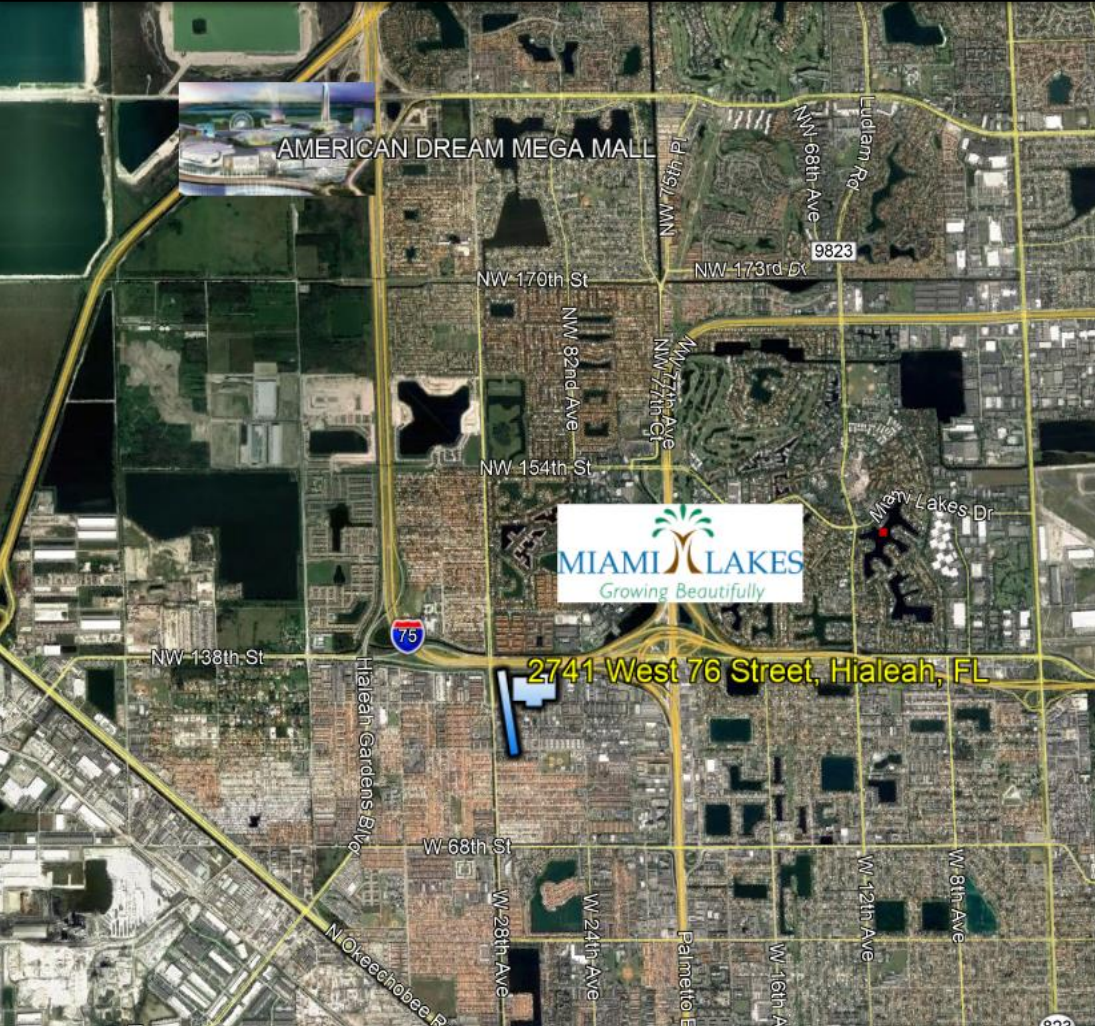
Tommy Gil, Director
Clint Komunale, Associate
305-817-8899 Office
www.vivogroup.net

Robert Komunale, President
786-269-4498 Mobile
www.industrialgrouprealty.com



AVAILABLE

7635 W 28TH AVENUE, HIALEAH, FL



For more information please contact
Tommy Gil, Director
Clint Komunale, Associate
305-817-8899 Office
www.vivogroup.net

Robert Komunale, President
786-269-4498 Mobile
www.industrialgrouprealty.com

